

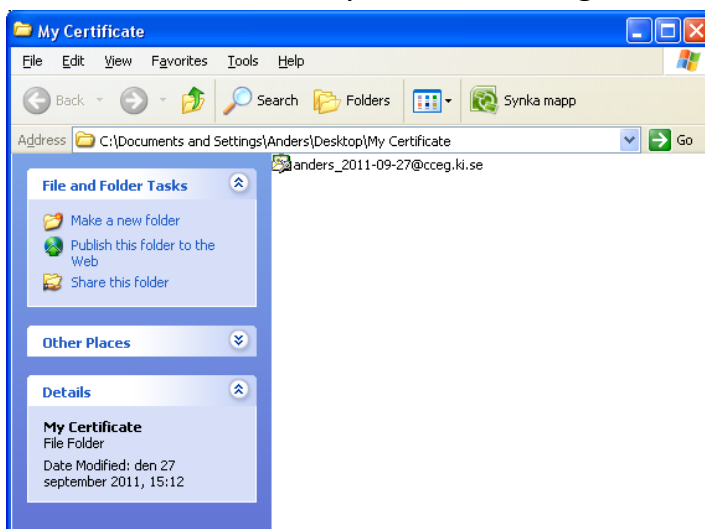
Certificate Installation in Internet Explorer

This installation is done in Internet Explorer 8 on Windows XP. If this guide does not answer your questions please do not hesitate to contact CCEG.

1. Download the certificate on to your computer. It can be downloaded from the CCEG website at www.cceg.ki.se. Choose "Download certificate" in the dropdown menu on the right. See below.



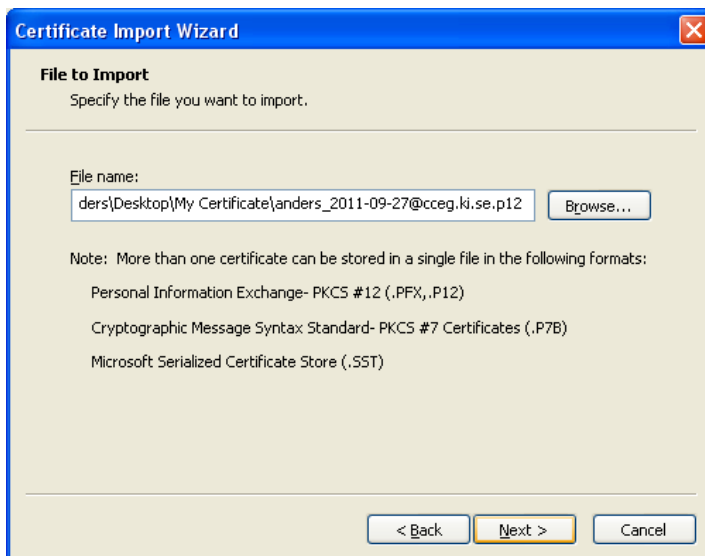
2. Start the installation by double clicking the file.



3. Read the information and click “Next >”.



4. Click “Next >”.

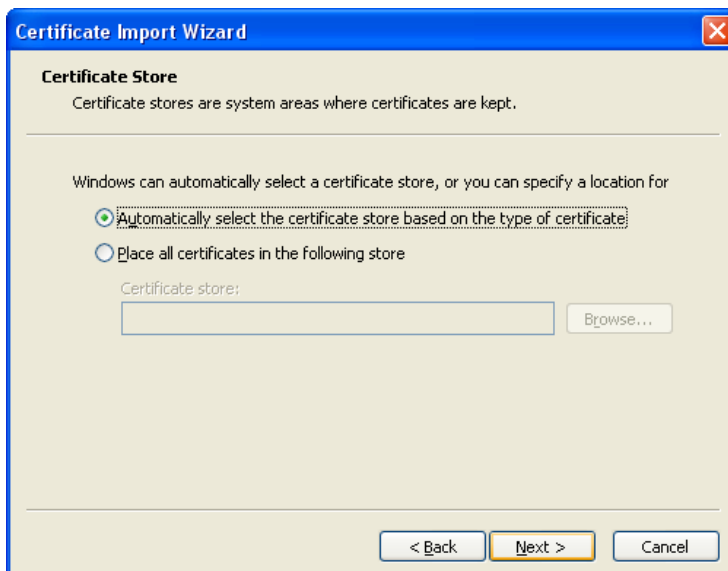


5. Enter the installation password and make sure the checkboxes are ticked. Click “Next >”



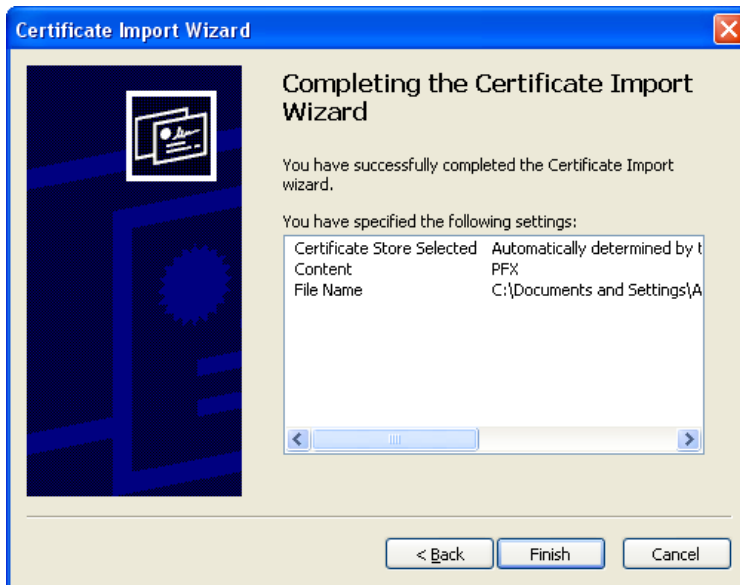
Users who gained access prior to September 2011 have had a password sent to them by fax. New users have had the password sent to them by email. By ticking the checkboxes unauthorized use is prevented. This is very important if the certificate is installed on a shared computer. The certificate can later be exported to other computers by using the certificate export tool in Internet Explorer.

6. Click “Next >”.



Choose the default location to store the certificate. Only highly advanced users who are familiar with certificate stores should consider another alternative.

7. Click "Finish".

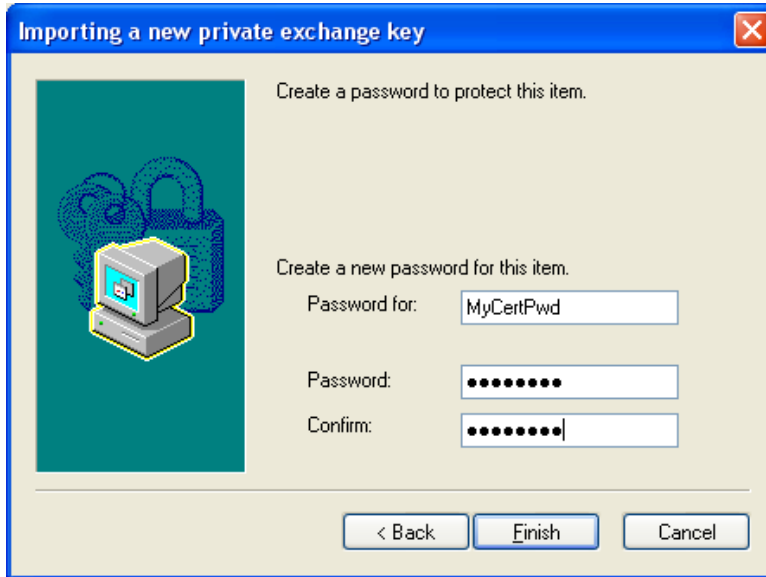


8. Choose high and click "Next >".



Protect the certificate from unauthorized use.

9. Enter a name for the protection password e.g. “MyCertPwd” and set the password. Click “Finish”



Please enter a password that contains digits, upper and lowercase characters.

10. Click “OK”.

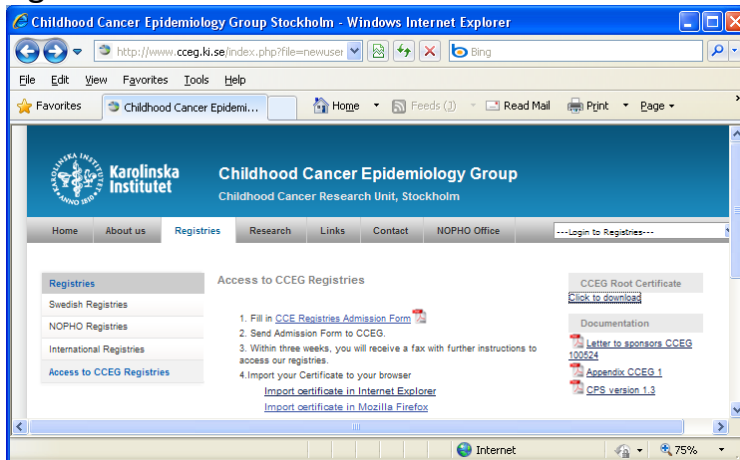


11. Click “OK”.



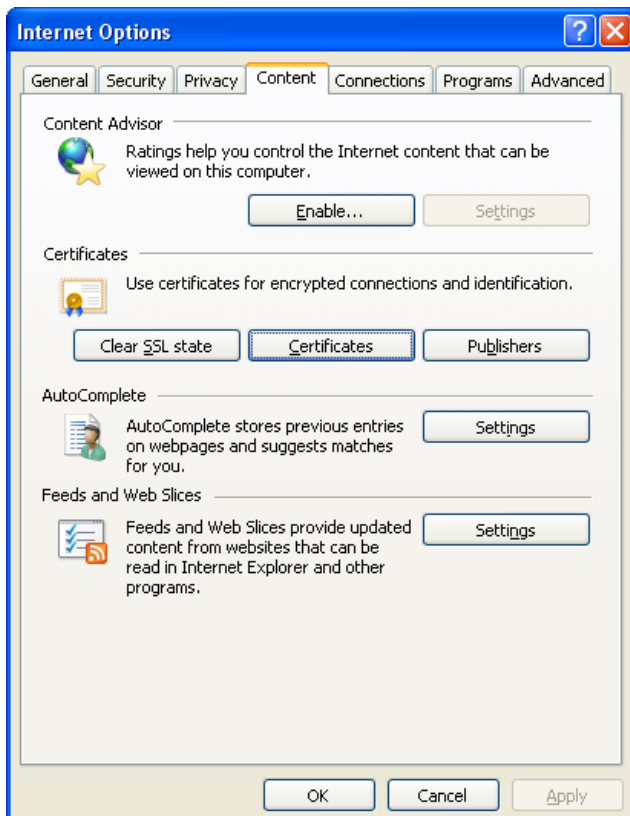
The certificate is installed.

12. Download the CCEG root certificate on to your computer. It's available at the CCEG website under Registry\Access to CCEG registry tab on the right. See below.



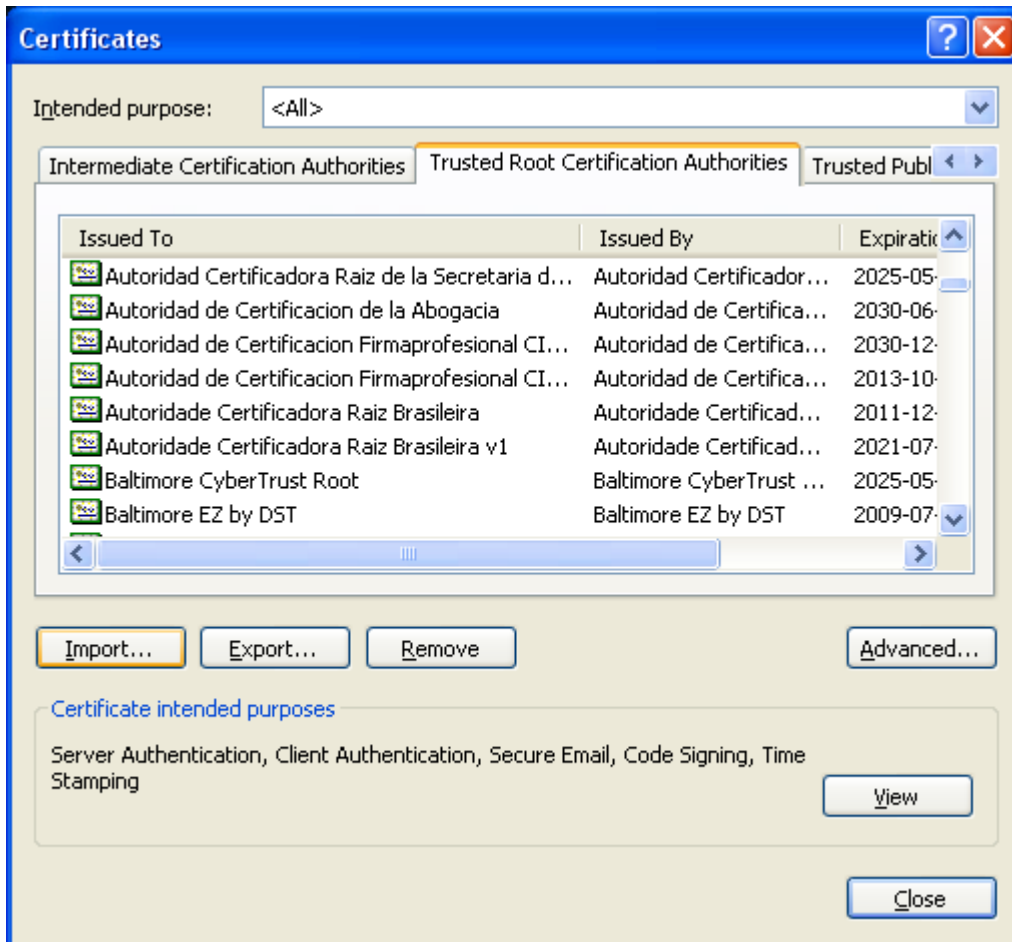
If the root certificate is not installed some webbrowsers will show an errorpage or ask wheter you trust this site.

13. Install the root certificate. Open Internet Options in the Tools menu. Click "Certificates" in the content tab. See below.

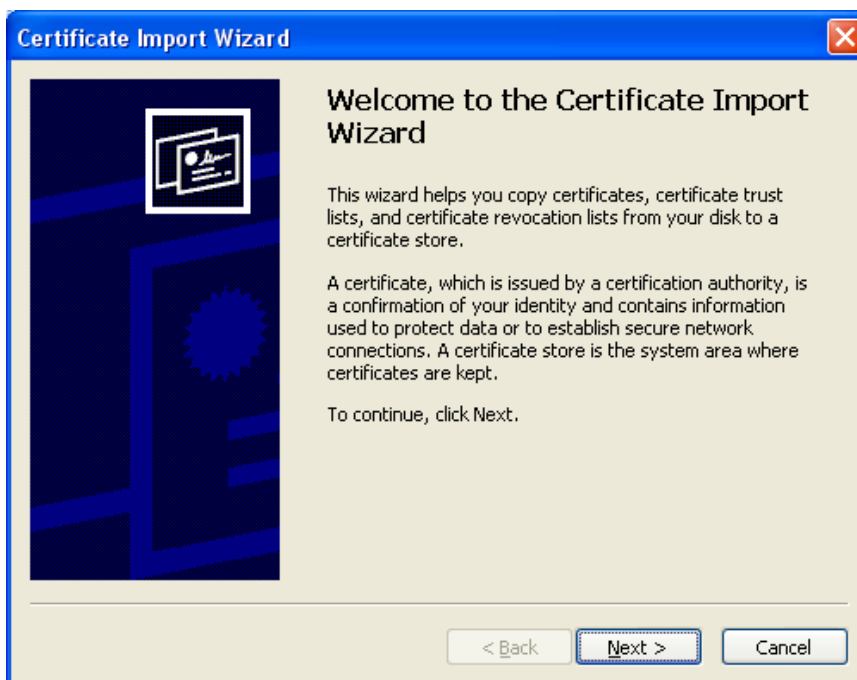


The rootcertificate may need to be installed to avoid invalid error messages. The error messages is derived from security settings in the browser.

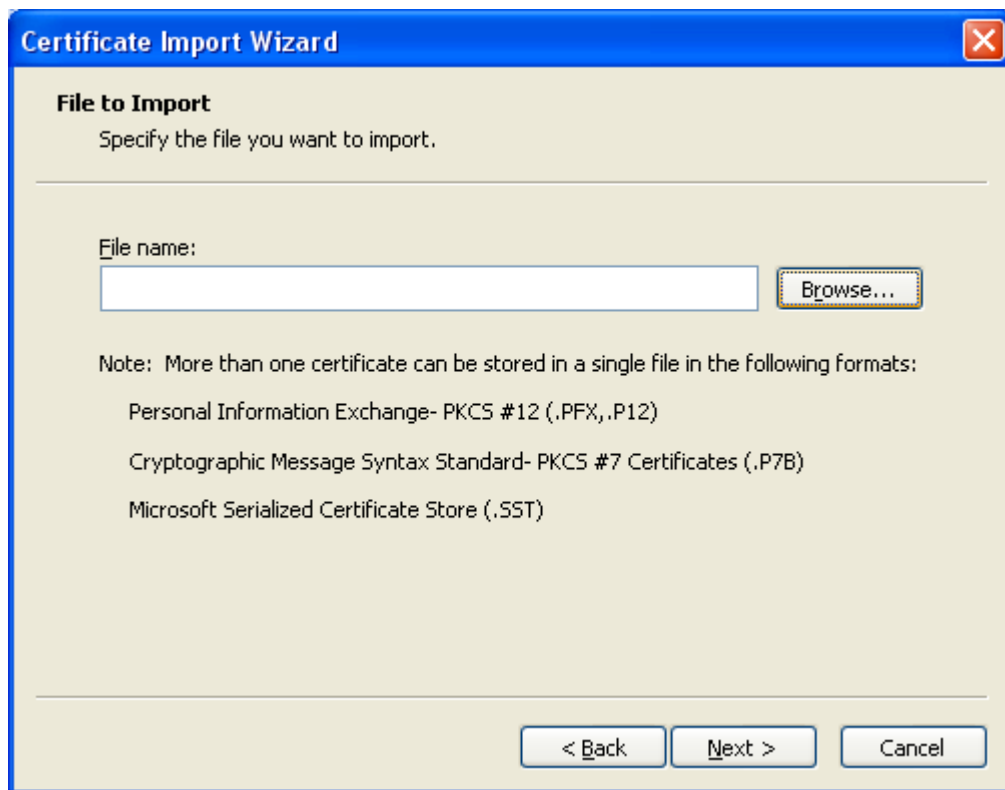
14. In the Trusted Root Certification Authorities-tab Click “Import..”



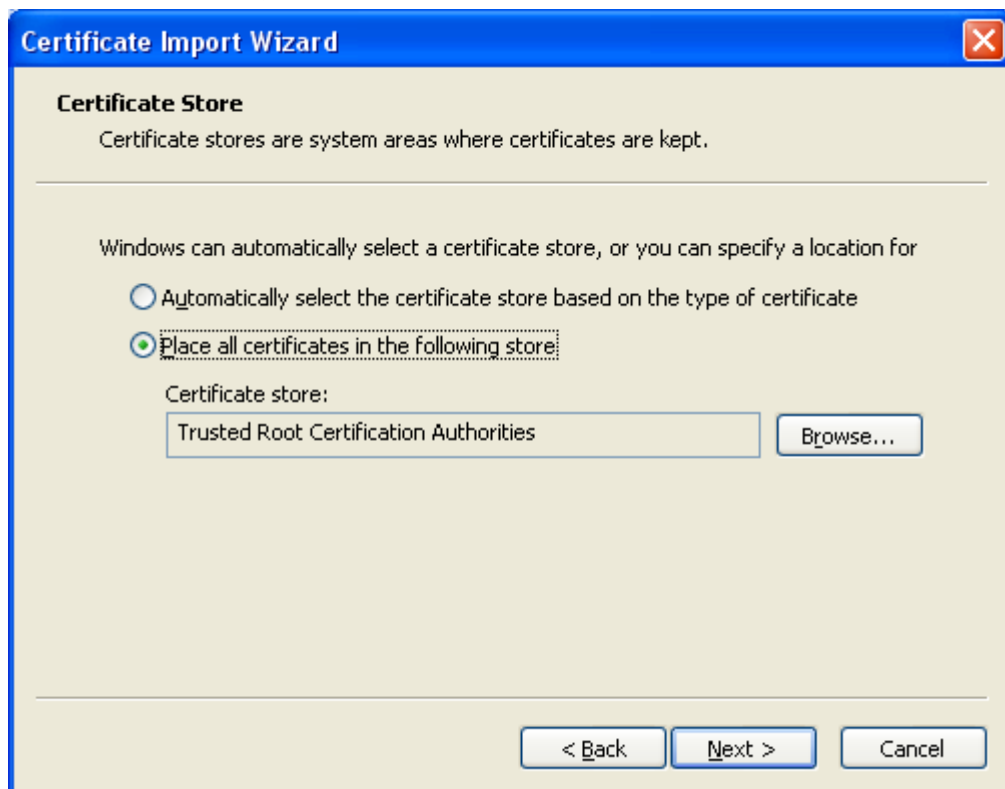
15. Click “Next >”



16. Click “Browse” and select the rootcertificate and then click “Next >”.



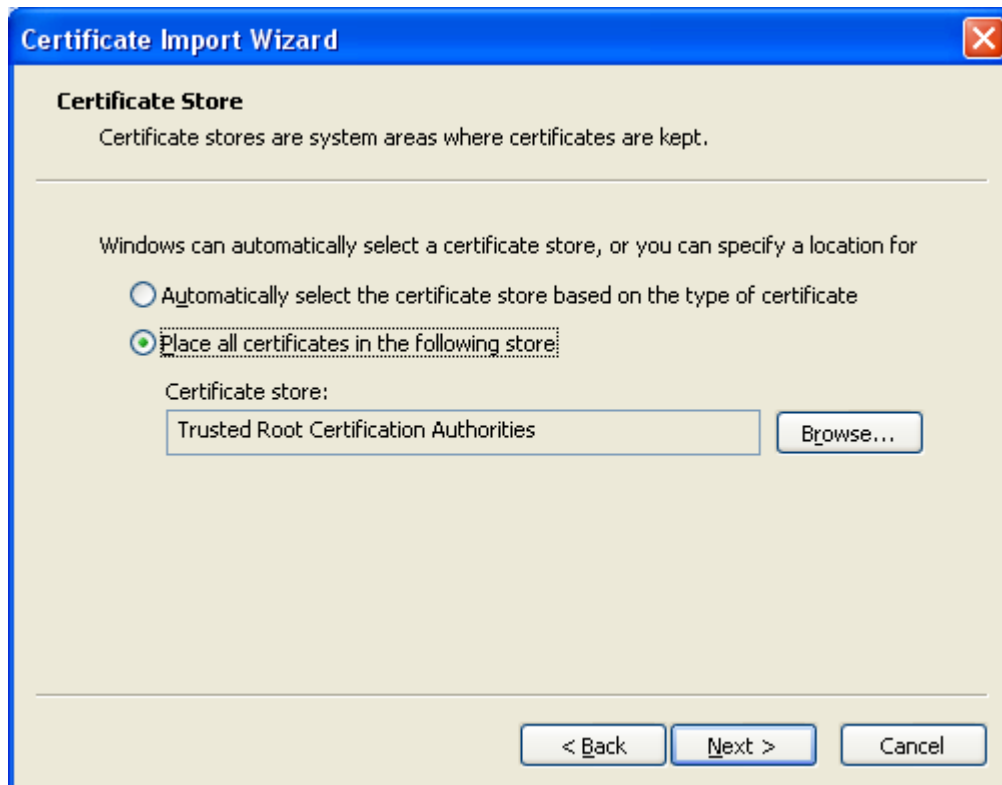
17. Set the second option: “Place..” and click “Browse”.



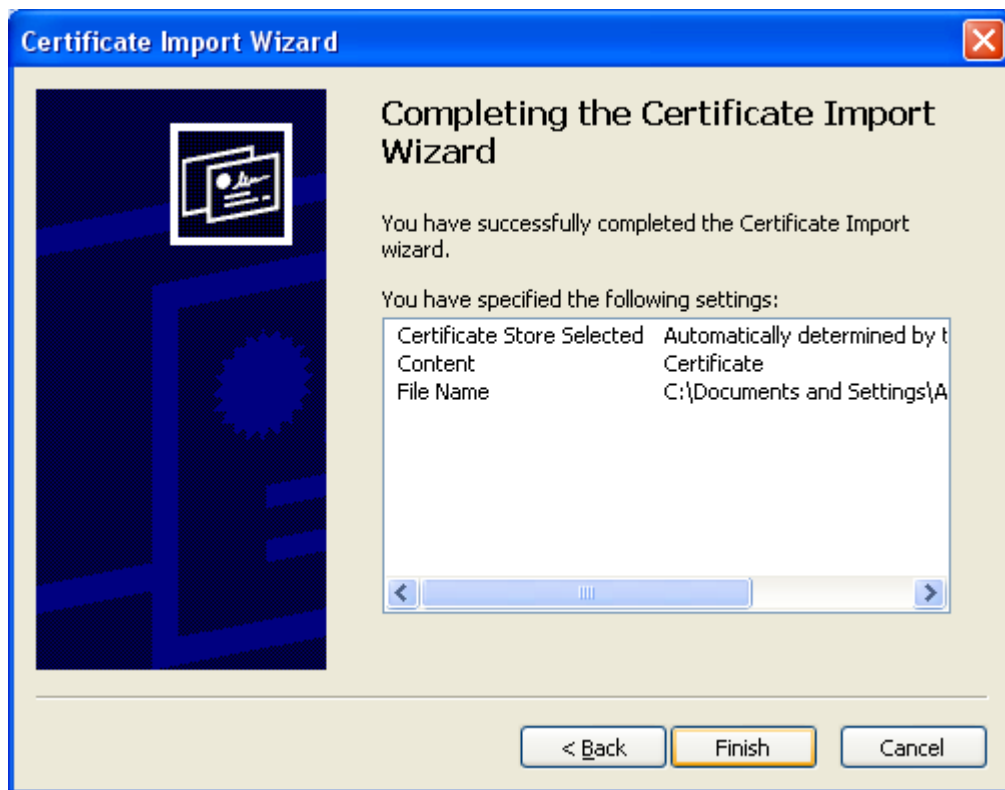
18. Select “Trusted Root Certification Authorities” and click “OK”.



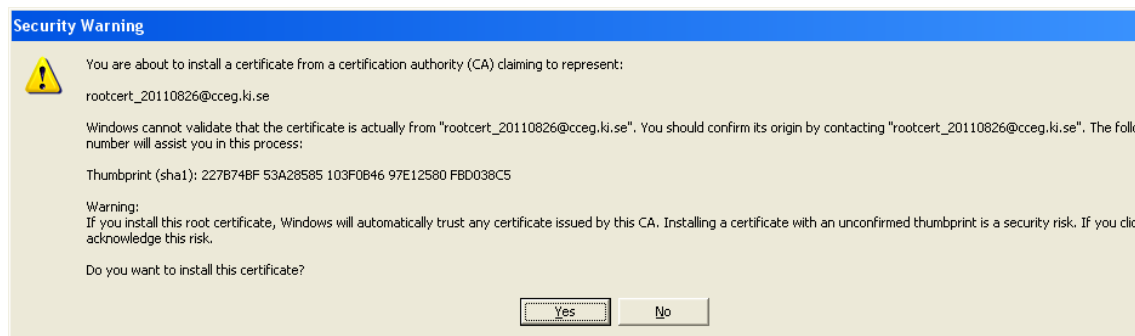
19. Click “Next >”.



18. Click "Finish".



19. Click "Yes".

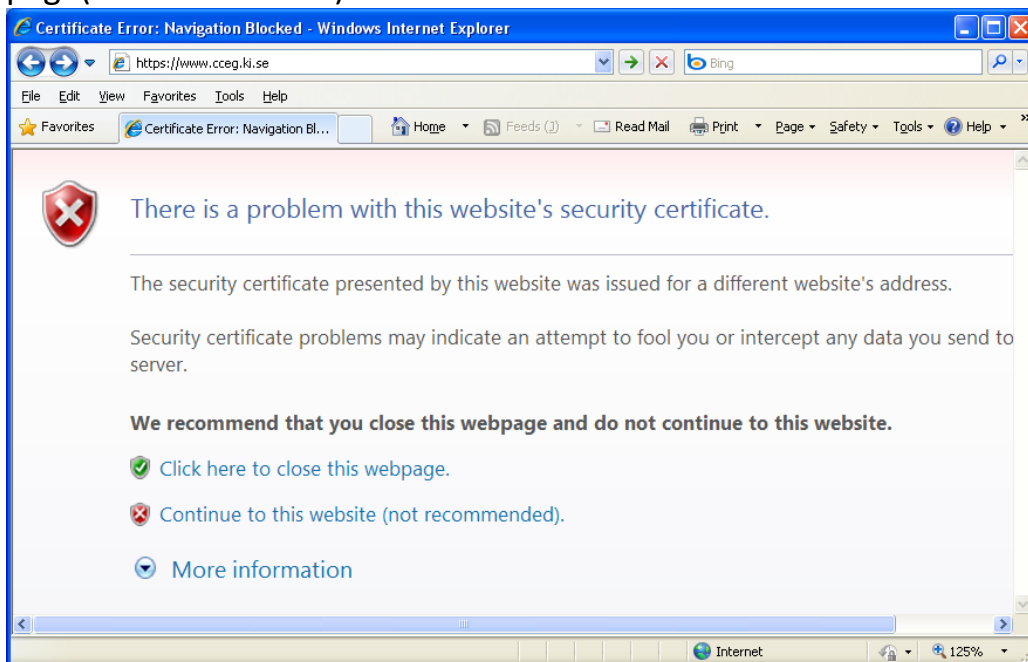


20. Click "OK"



The rootcertificate successfully installed.

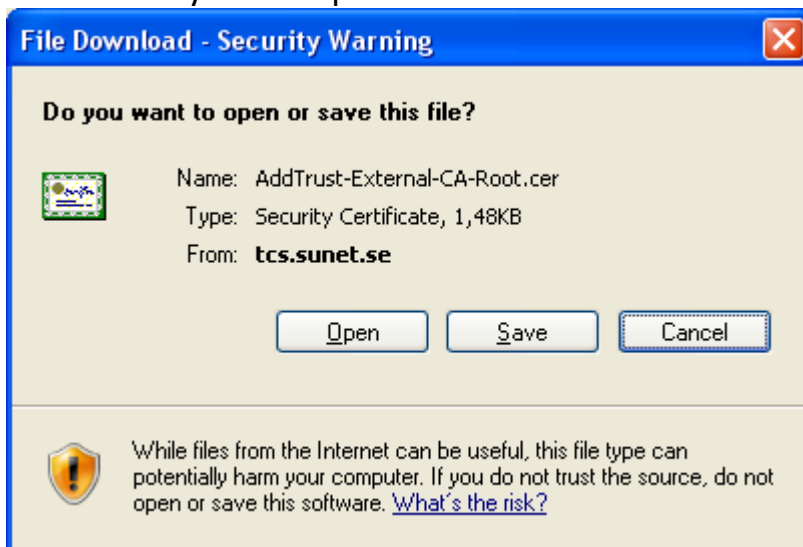
21. If you try to connect to the registry and the browser shows an error page(as shown below)



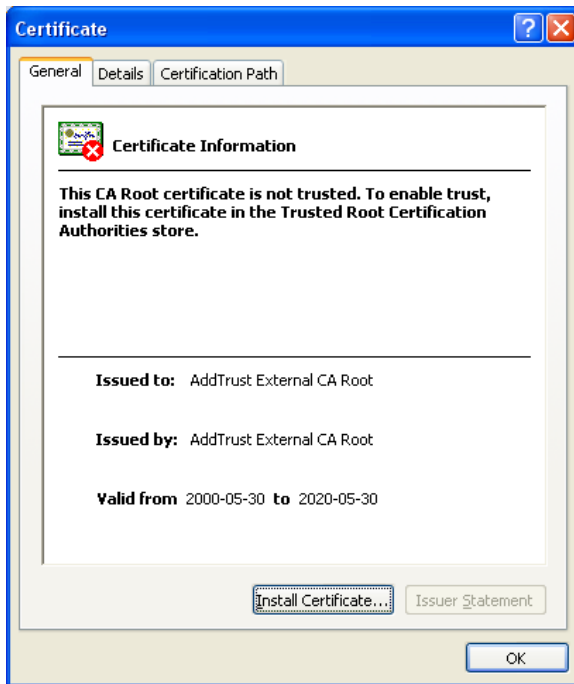
Install certificates in the list from AddTrust External CA Root, UTN-USERFirst-Hardware and TERENA SSL CA.

1. <https://tcs.sunet.se/info/AddTrust-External-CA-Root.crt>
2. <https://tcs.sunet.se/info/UTN-USERFirst-Hardware.crt>
3. <https://tcs.sunet.se/info/TERENA-SSL-CA.crt>

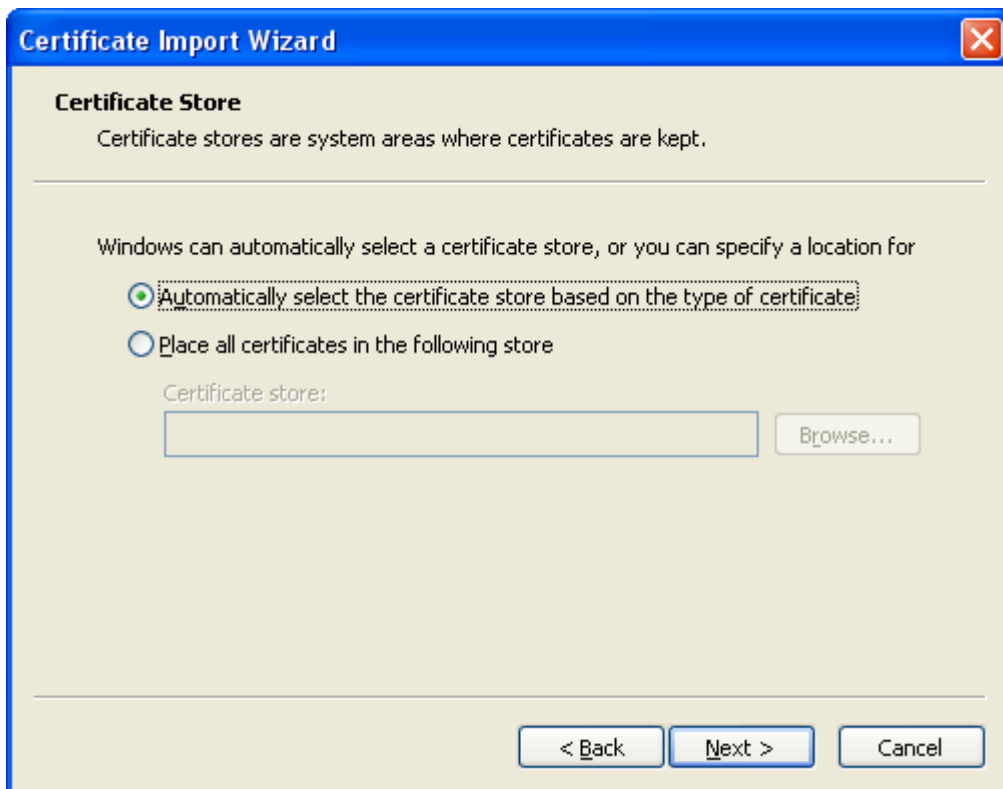
22. Enter the addresses one by one and in the browser and if the browser shows a similar error page click “Continue ..”. Install the current certificate by Click “Open”.



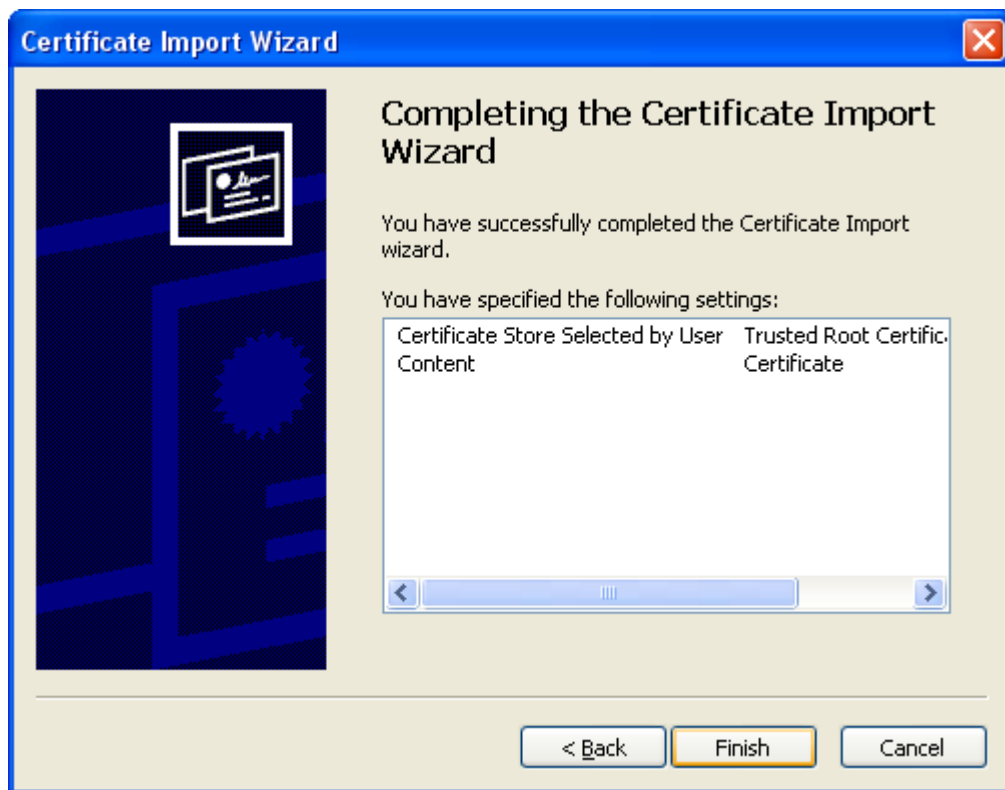
23. Click “Install Certificate..”.



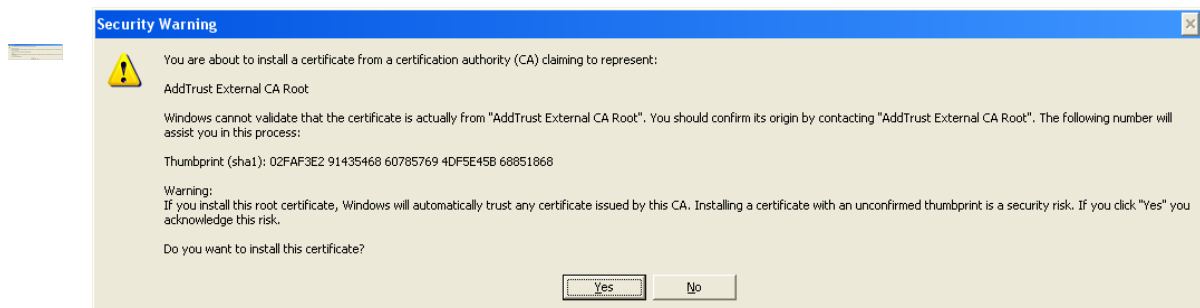
24. Choose “Automatically select ..” and click “Next>”.



25. Click "Finish".



26. Click "OK".



27. Click "OK".

